



Camp Concepts, Inc. is the company that owns and operates the camp entities of Big Oak Day Camp, Little Buds Day Camp, and Expressions Day Camp. Our leadership team has over 150 years of combined teaching and camp administrative experience. Camp Concepts was formed in 2003 and Steve has been in the education and camp industry for more than 30 years.

We believe the essential ingredients for building a strong community includes awesome campers and a dynamic and well-trained staff. We understand the value of camp and we have successfully proven that we know how to build and implement a dynamic and diverse program that helps create memorable & meaningful moments at summer camp. You have made the right choice!

Frequently Asked Questions

What makes our camp staff structure so solid?

Each director is an experienced veteran educator who also has extensive camp leadership experience. This team of talented and committed leaders has unprecedented teaching and camp administration experience.

Year-round Administration:

Executive Director: Steve Haines

Account Services: Linda Schloo

Seasonal Directors:

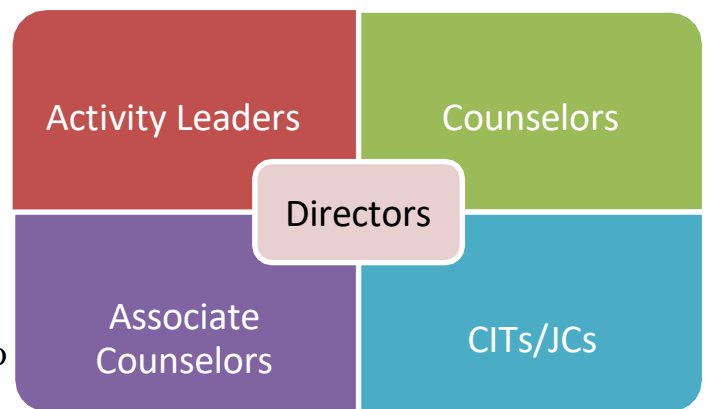
Big Oak Director: Steve Haines

Big Oak Assistant Director: Steve Bernardini.

Little Buds Directors: Ashley Carlson & Jen Schloo

Expressions Directors: Debbie Kirk

Administrative Coordinator/Logistics: Stefanie Schloo



Activity Leaders: Activity leaders are usually career teachers. Their role is to lead and facilitate the games and activities throughout the day. As experienced facilitators and educators, they are experts at leading and adapting the many camp games & activities.

Little Buds and Expressions also utilize Activity leaders for many of their activities, but their staff will also lead activities as well as invited specialists and guests from the outside.

Lead Counselors: Counselors are usually college age or late high school students with a displayed the interest and aptitude for working with children. They play a key role in the life of a camper as mentor, friend, and community builder.

Counselor Support Staff: Lead counselors have leadership assistants in managing the campers. The leaders in training are part of the A2I Teen Leadership Training Program (Aspire To Inspire).

The A2I Teen Leadership Program is a competitive teen leadership program where individuals apply and must be accepted into it. At minimum, it is a 3-year training commitment as we provide these aspiring young leaders with the opportunity to grow their leadership skills.

Associate Counselor (AC): An AC is someone in their 3rd year of our leadership training program. They have previously served as a CIT & a JC and are utilized in providing excellent care of our campers. ACs are appointed by directors.

Junior Counselor (JC) : 2nd year of young leader training. JCs automatically matriculate up from role of CIT from previous summer.

Counselor In Training (CIT) 1st year of young leader training. Application process on website. Must be 14 yrs. old by the May 1 to qualify.

Will lunch be provided? Yes! Our lunch is fabulous! Hot entrée choices as well as the daily option of salad bar, sandwiches, yogurt, fresh fruit. The cost of lunch is included in the camp tuition.

Will there be swimming? Yes! We have arranged for our campers to enjoy indoor swim in a local school district's beautiful indoor pool. (Little Buds does not travel off campus). Swim will be on the schedule and campers and staff take busses or camp vans to those locations. Certified Lifeguards are on duty at these sites. Big Oak does offer swim instruction to those still gaining confidence in the water otherwise, campers may enjoy recreational swim. Big Oak campers swim 2 or 3 times per week, Expressions swim 2 x per week. Little Buds has onsite water play in inflatable pools.

We encourage campers to bring bathing suits and towels everyday as we will have a **large inflatable waterslide** on campus and the possible last-minute option of adding additional indoor swim time if the weather is severe. Little Buds has their own inflatable pools and smaller waterslide for their play.

Will a nurse be available? The majority of camp injuries are minor scrapes, bumps and bruises. We do have several staff that are first aide certified. In the event of serious injury, parents will be notified, and appropriate decision will be made as to whether camper should be transported to nearest medical facility. All medications and EPIs should be dropped off in the office.

Will transportation be available? No, we do not provide transportation to and from home. We can help assist in carpool by connecting you with local families who also seek the convenience.

What if I only want 3 or 4 days of camp? Our Little Buds program does allow for a 3 day and 5-day program option. A 4-day program can be arranged with adding a day to the 3-day option. However, our Big Oak program is a 5 full day program. The program is not pro-rate for missed days.

Do I get a refund if my child is sick or misses a day? Unfortunately, if your child misses camp due to sickness or other reason there is no refund. Please refer to our refund policy from the registration process.

Will you have A.M or P.M extended service? Yes, as a convenience to families, our general camp program will begin each day at 9:00 a.m. and camper pick up will be at 3:30 p.m. For those who need to drop off or pick up outside of those operating times, we will have an add on service of convenience. Extended Care is supervised yet unstructured time of play. While being constantly supervised, campers are permitted to engage in independent or cooperative peer play to expand friendships. This can be added at registration or anytime throughout camp. There is also a daily rate if you need only occasionally.

A.M. Extended care will begin at 7:00 a.m. Drop off in the gym.

P.M. Extended care will be available until 5:30 p.m. Pick up in the gym.

Per occasional day use- for those unexpected times, simply give us a call and the service can be added on an as needed day basis. Contact Linda Schloo for this service: 215-285-2537.

How do I reach the camp or my child during the day? You may always call the Executive Director: Steve Haines (267-261-4098) or any of the Directors. We will make director phone numbers and the nurse's phone numbers available prior to camp.

Will my children be transported for off campus trips? Yes. Big Oak and Expressions campers do travel off campus. Little Buds do not leave campus. Whereas we believe our on-campus program is awesome, there are times we like to give the campers a different experience or change of scenery by taking them off campus for a field trip. In such cases, campers will be transported by a local bus transportation company. Most times, admissions costs are included in the camp tuition. There may be an occasion where additional money might be needed for things not included, such as snacks, arcade games, etc. We will communicate these needs in advance. Off campus transportation is contracted through a local bus transportation company.

What will campers do on rainy days? Fortunately, we have plenty of indoor space so managing campers in the many spaces we have is not a complicated issue for us. Plus- who minds a little fun in the rain from time to time!

What activities do campers participate in?

We do many of the traditional or usual camp activities: arts & crafts (we call it Creations) various group games, some of the major sports such as basketball, soccer, kickball, pickleball, wiffleball, Newcomb, touch football, soccer, street hockey (sockey), Ga-Ga, etc. Your children will get to play many crazy games like Double Whammy Kickball, Jurassic Park and Tchoukball. We also have some of the fun discovery activities like Curiosity Shops, stream stomp, laser tag and more. With a background as Physical Education teachers and many years of camp administration experience, we have a collection of over 100 games and activities that are fun and have proven to be successful camp games.

We also have many non-sport related games and activities such as martial arts & self-defense, baking/cooking, team building/team challenge activities, and others.

How are kids placed into groups?

Big Oak campers are placed in co-ed groups related to their grade in school. There may be groups formed within an age range of 1 or 2 years depending on registrations and friend requests.

Big Oak campers are placed in grade-level groups. Our oldest group is typically a grade range of those going into 6th-9th grade. This is also the Teen Travel group.

Expressions typically has 2 co-ed divisions Lower camp @ age 6-10 & upper camp @ 11-16.

Little Buds grouped by age at the time they enter camp.

Grouping requests- We do our best to honor grouping requests. In most cases, this is not a problem. However, please recognize the need for the camp to be a social learning situation and sometimes groups may be at capacity or a different set of dynamics that need to be considered. It is also important for parents to realize that sometimes, what may seem like a source of comfort (to be with a friend) may instead be a social inhibitor. We find kids to be far more resilient than adults often give them credit for. Sometimes letting kids expand their social horizon and network ends up being a life-enriching, life-changing growth opportunity.

How do I register? www.CampConcepts.org and complete the online registration and payment process. For your convenience, additional payments may be made online (credit card or eCheck) or by personal check. We also have payment plans available. If you need any assistance, you may contact Linda Schloo, Account Services, at 215-285-2537.

Do you provide a sibling discount? Yes! Some restrictions apply.

Will we get details of what to bring prior to the start of camp? Absolutely! We have all the information you may need and that will be sent prior to the opening day of camp.

What if I still have questions? There are not many programs where the Executive Director hands out his/her phone number but- you can always text or call Camp Concepts owner and Executive Director- Steve Haines at 267-261-4098.

What if I want to add weeks? Most times this is not a problem. Many times, parents of young campers want to “give it a try” first. As long as there is space remaining in the group, we can usually accommodate extending the number of weeks attending.

What about changing or dropping weeks? Our refund policy clearly states the guidelines and conditions surrounding dropping or canceling a registration. Everyone always feels their circumstances or reasons for their change of plans are unique and special. Please read the refund policy closely to avoid any confusion should changes occur.

Who do I contact should I need a change? Account Services Manager- Linda Schloo 215-285-2537
Accounts@CampConcepts.org